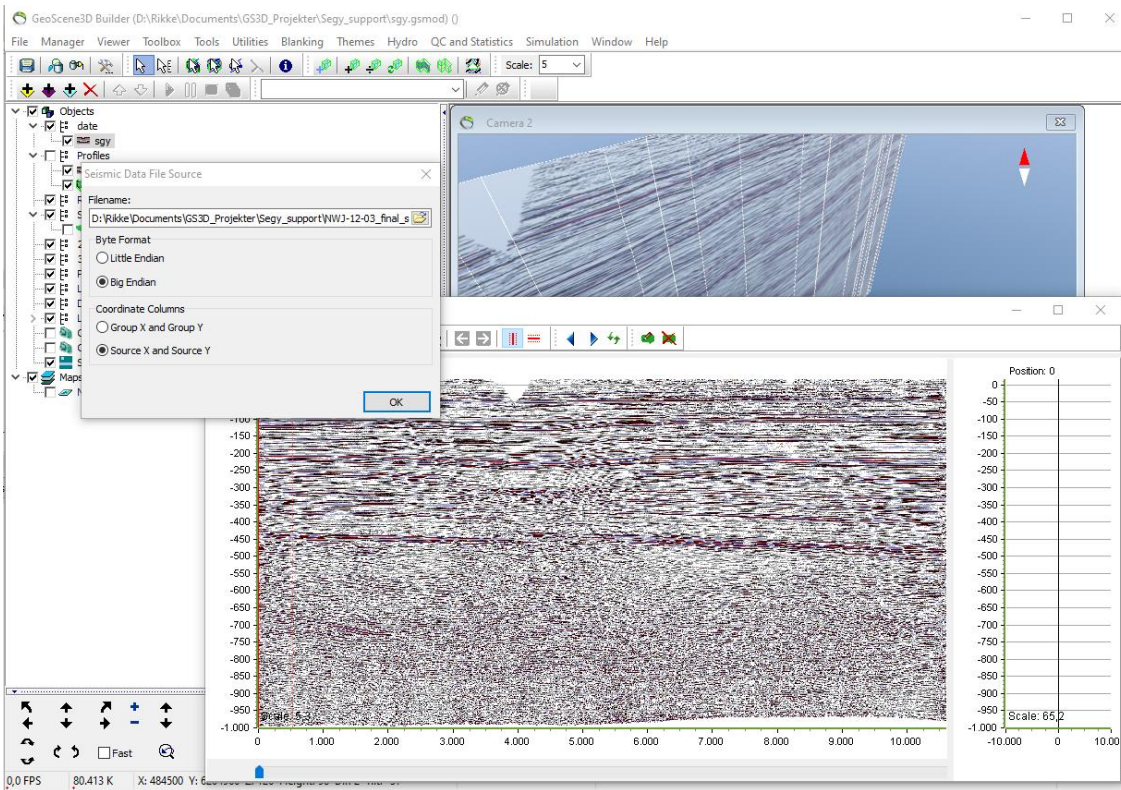


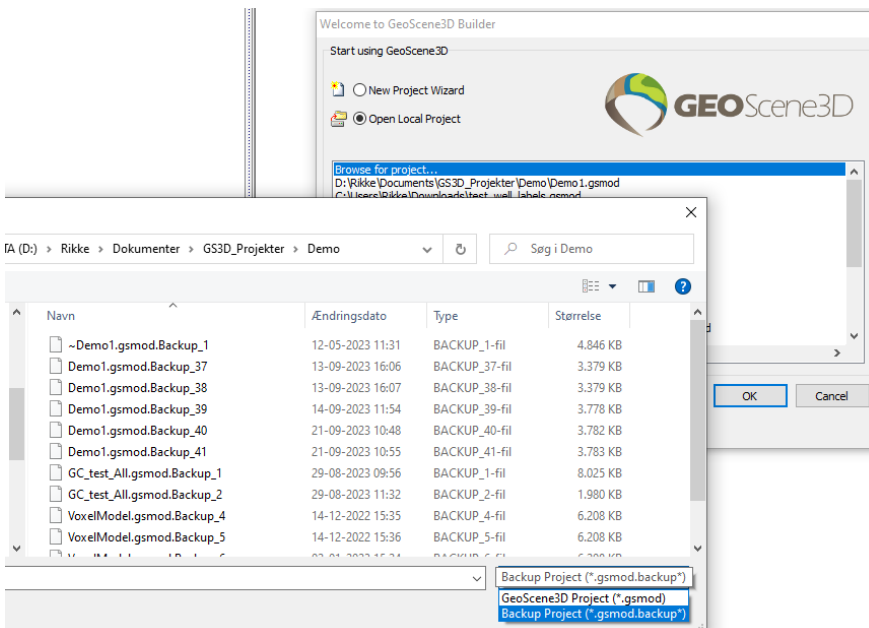
December 03, 2023

# New Features

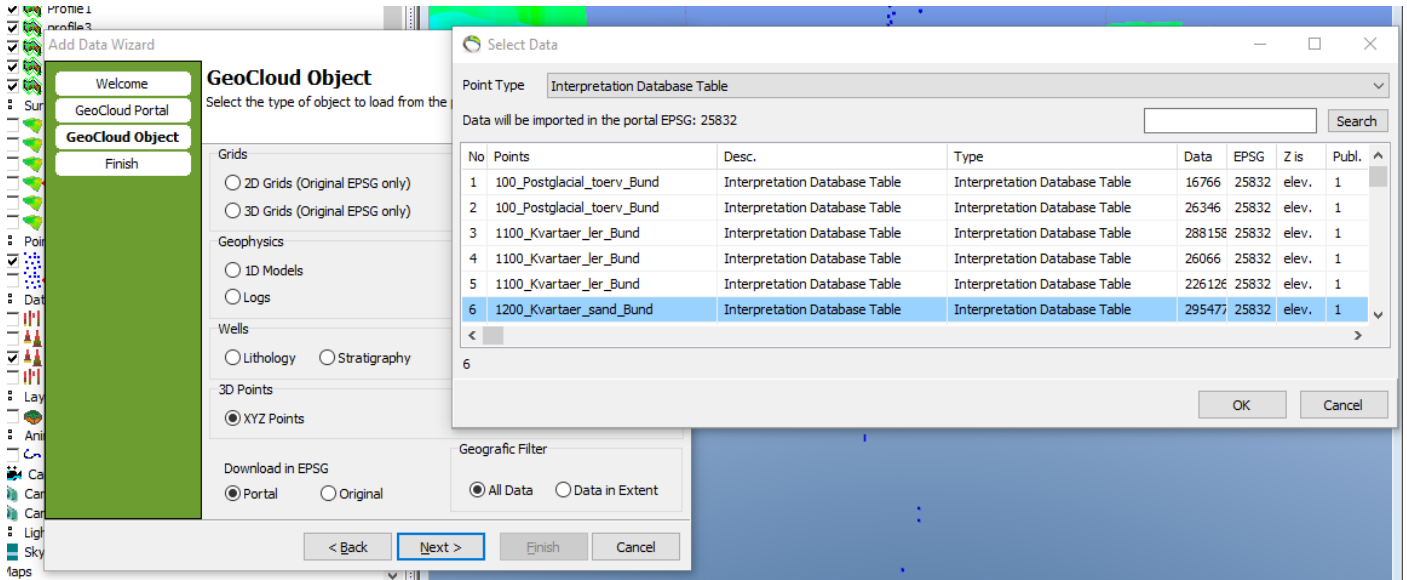
Seismic data import has been extended to support other coordinate columns in the file. Coordinates from Group or Source columns can be used.



Backups can be opened by selecting the backup filter on the open project dialog.



When you download data from GeoCloud you can now see all data of a specific type, also if it's outside the current scene extent. Use the Geographic filter: All data or Data in Extent.



## Improvements

- Point imported from GeoCloud without a value is now supported.
- Aquifer vulnerability maps output has been changed to better distinguish between vulnerabilities and non-existent data.
- XYZ point file export for GeoCloud now includes a descriptive header and the color value.
- Borehole label text align on profiles.
- Borehole access database export for GeoCloud naming improved.
- Borehole access database export for GeoCloud now has indices on Borehole Id columns.
- When adding an interpretation point the author is read from the email in the license file.
- SGY file position on profile validation added.
- 3D grid properties form improvements.
- Attribute well user interface has been improved.

## Bug fixes

- Rounding scene extent feature has been fixed.
- A bug in 3D interpolation of points and ODV models has been fixed.