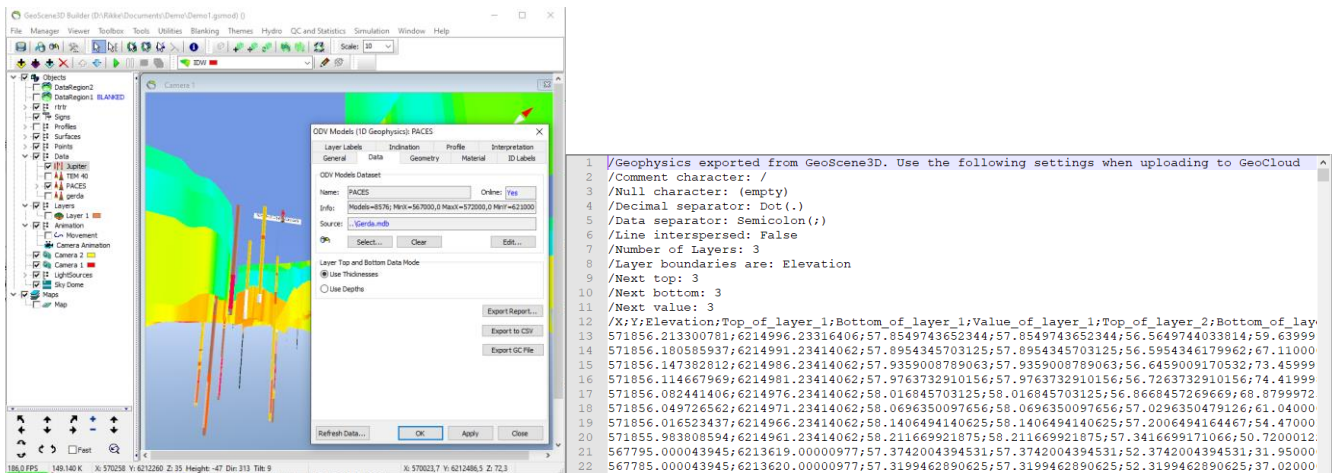


June 27, 2022

New Features

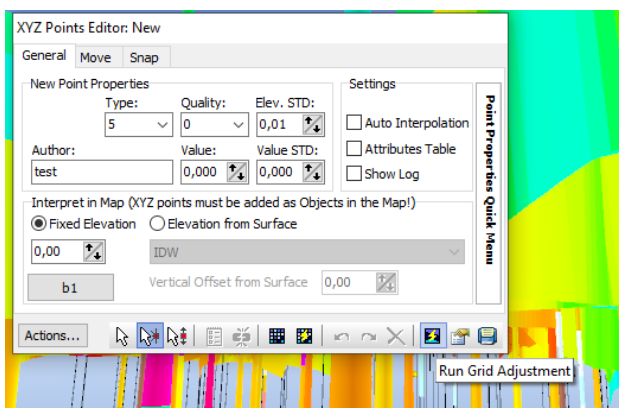
- 1D geophysics data can be exported in a format easy to upload to GeoCloud. The header includes the setting used during the import.



- Borehole data can be exported in a format easy to upload to GeoCloud. The ability to fit to terrain and handle missing screen top/bottom etc. can then be utilized.
- Point data can be exported in a format easy to upload to GeoCloud.

Improvements

- Grid adjustment can now be run directly from the XYZ points editor.



- Jupiter borehole template has been updated to support GeoWell Editor.
- A message is shown if you try to import a csv file that is opened elsewhere.
- The database tool, where you can import sampled points from a vector theme has been improved.

Bug fixes

- Polygon blanking of 1D geophysics in fence mode now works properly.
- A minor bug regarding decimal numbers in MPS has been fixed.
- 3D grid normalize has been improved.