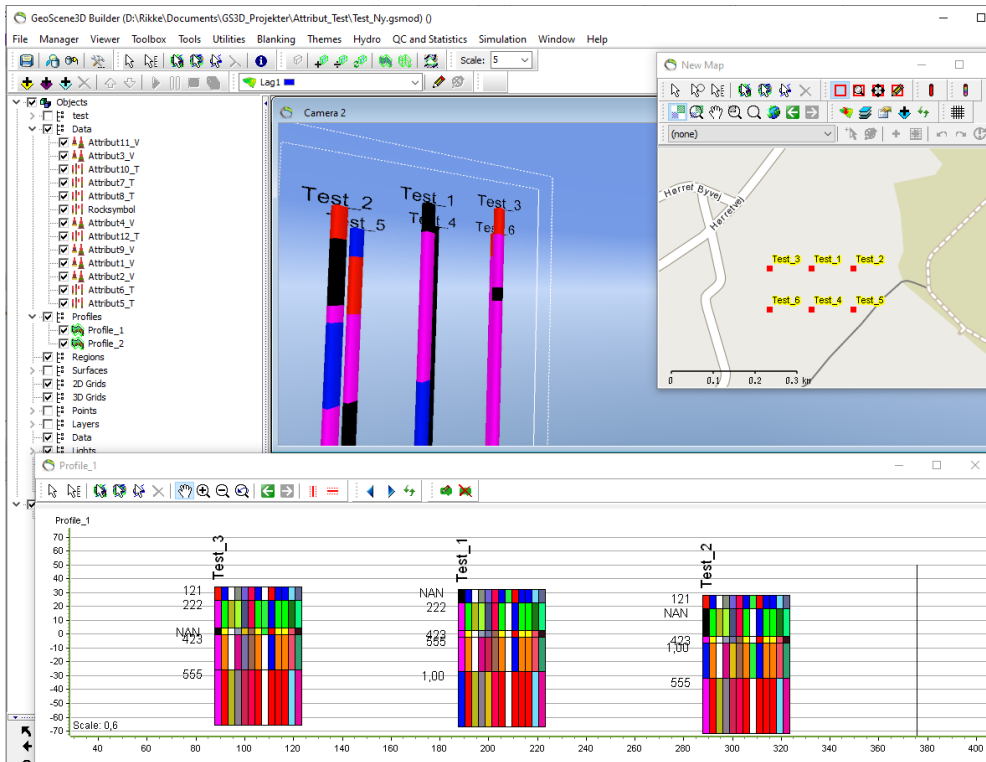


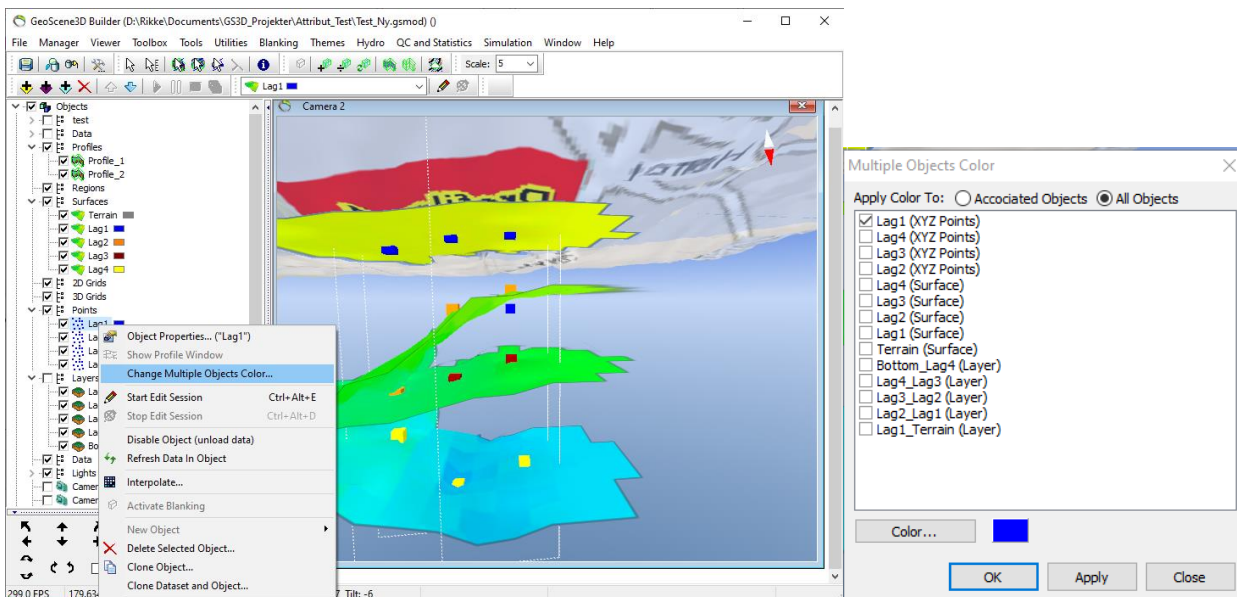
January 20, 2022

# New Features

Wells with multiple attributes, called attribute wells, has been added as a new object type. This supports value attributes, like chemistry and text attributes like color. The topmost attribute is shown in 3D, but all selected attributes are shown in profiles.



Change color on multiple objects at the same time for layers, XYZ points and surfaces.



Particle trace highlight. It is now possible to filter the line of XYZ Points by ID (under Line tab in XYZ Points properties form). The line filter is synchronized between 3D view with 2D profile and 2D map view

