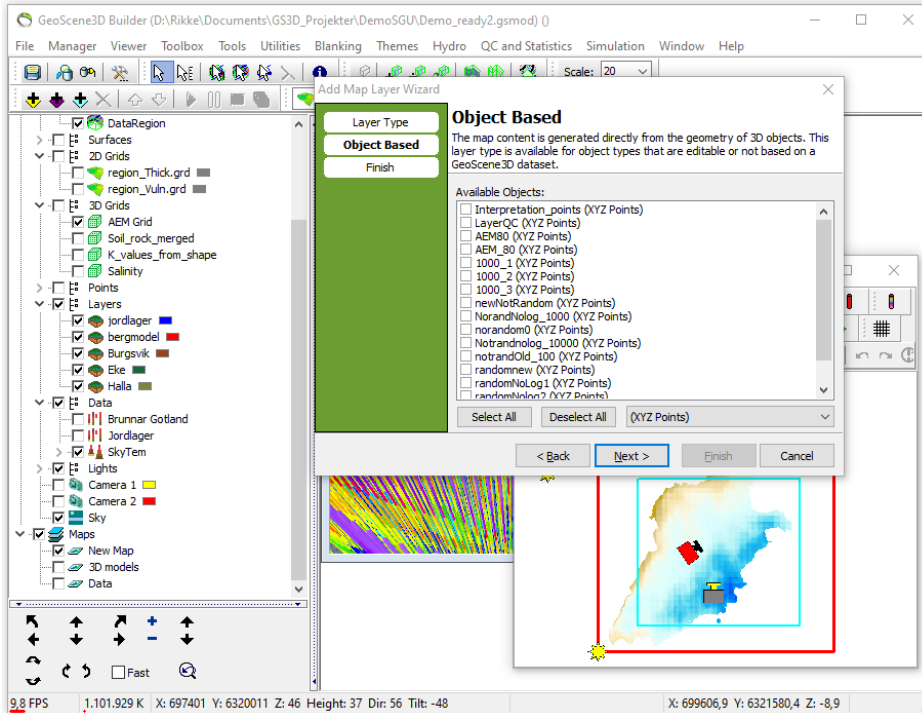


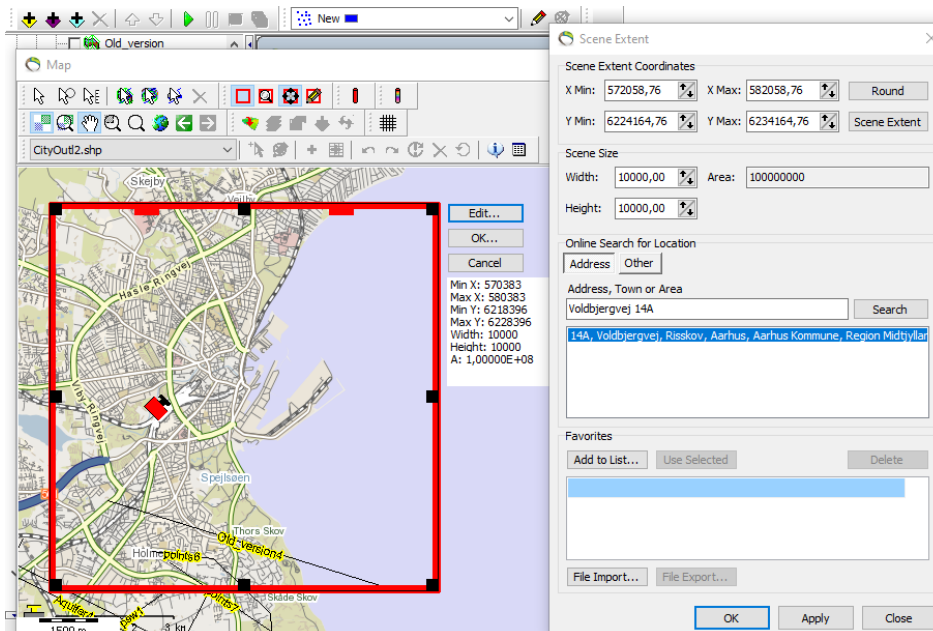
May 25, 2021

# New Features

- Map layers can be filtered by type, to make it easy to find the object to add.



- Pictures added to profiles can now easily be positioned anywhere on the profile.
- Worldwide open street maps can be added to a map.
- Worldwide address search has been implemented when moving the scene extent.



- For the danish users 'Matrikel' search has been implemented when moving the scene extent.
- Toolbox: Two aquifer vulnerability maps can be combined to show if one or both aquifers are protected.

## Improvements

---

- The import of interpretation points from a csv-file has been improved by many factors.
- The smoothing of 2D grid in maps is now working properly.

## Bug fixes

---

- A bug in cluster 1D models has been fixed. It was only present when running on selected layers and not all layers.
- Scene extent using favorites bug has been fixed.
- Snap to wells in GeoCloud portals now works properly.