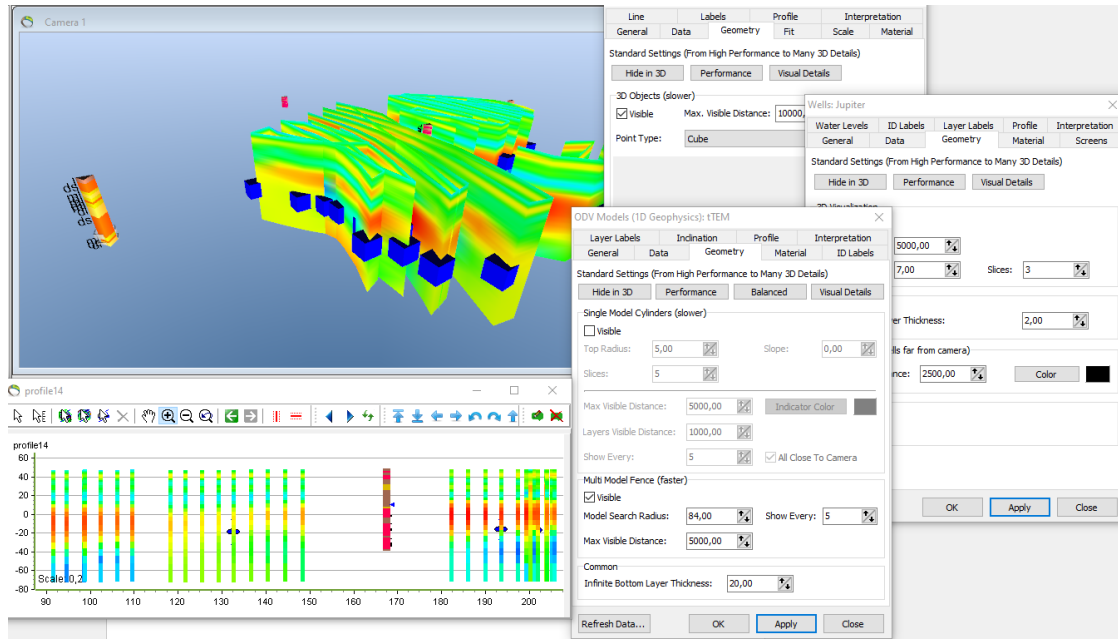


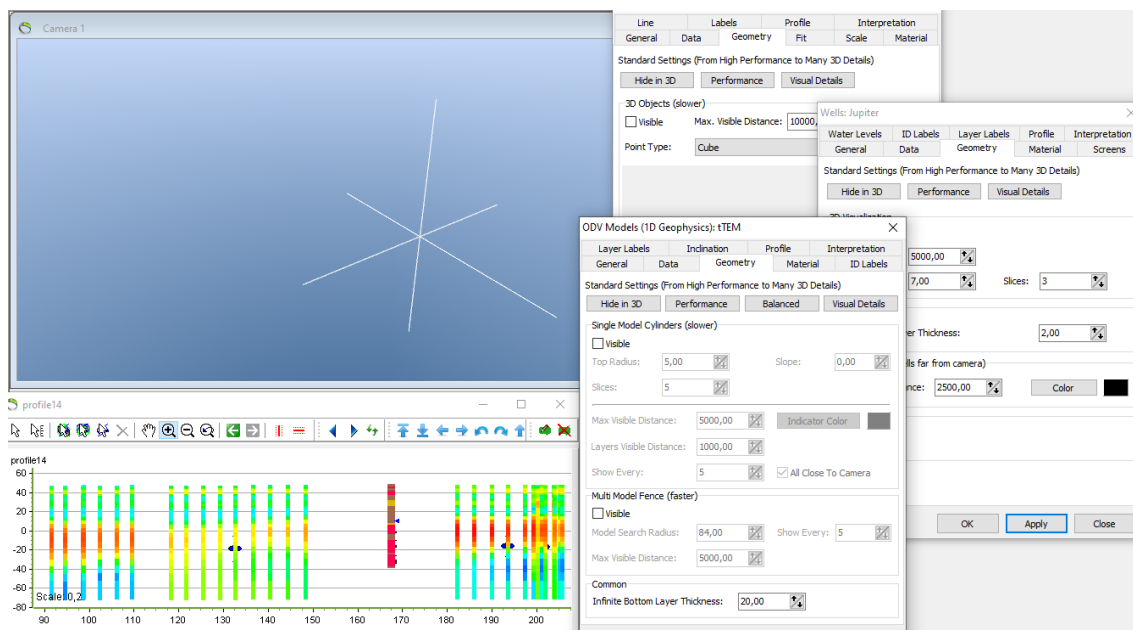
August 29, 2024

# 3D visualization standard settings

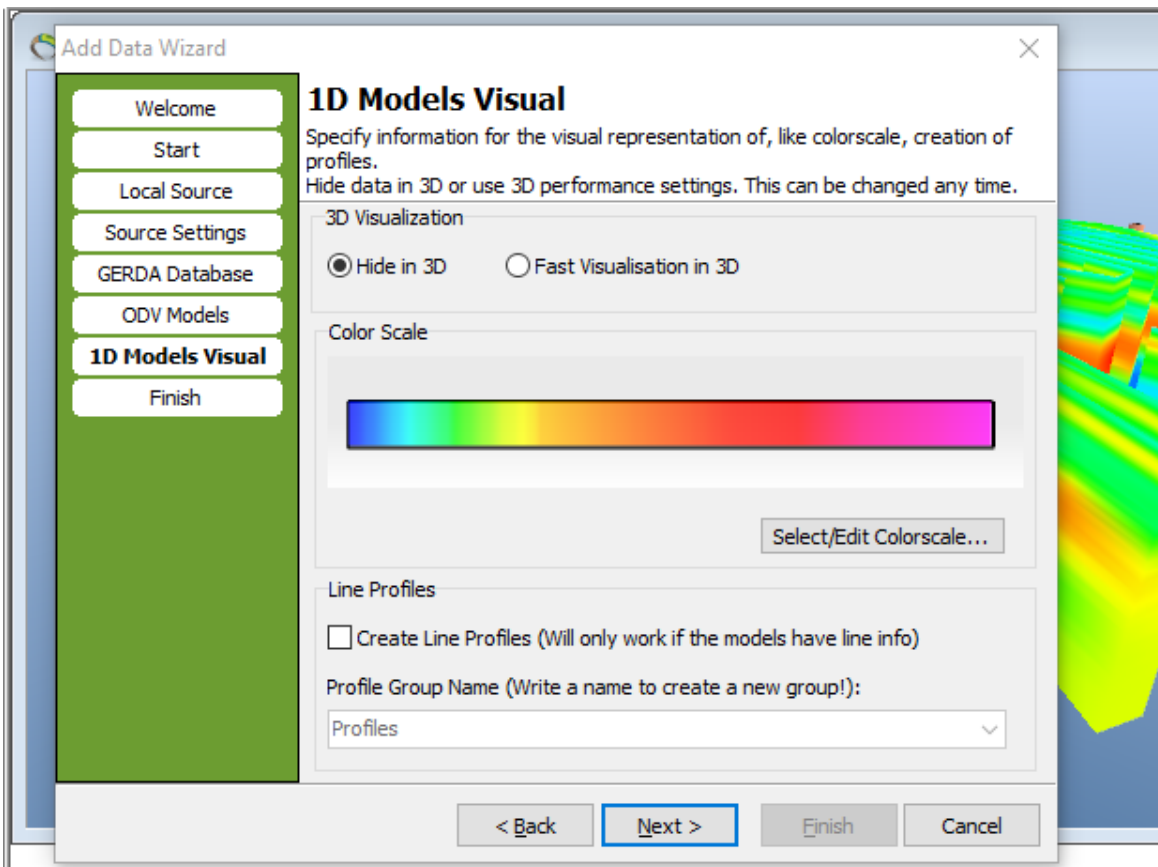
New standard setting has been introduced for 1D models, points and wells. Either many 3D visual details or speed performance can be prioritized, but never both. Therefore, some standard settings can be used, to give more weight to visual details or speed. Beware to use the “Visual Details” setting, if you have many data.



The most speed performance enhancing choice, is to completely hide in 3D. The data can still be shown on the profiles as usual. See below.



Since 1D model data can be heavy, there is a new option to hide in 3D on import. The data can always be visualized later if needed.



## Improvements

- When starting an edit session, the interpretation points are refreshed. This prevents the points in the gsmod file and the interpretation database to get out of sync. The refresh only happens the first time the edit session is started after the gsmod file is opened.
- Improved the way the gsmod file is saved, specifically for profiles.
- Sorted portal names alphanumerical in the portal data wizard.

## Bug fixes

- Fixed the negative numbers in the memory monitor. Now the correct values are shown.
- Changed the code handling grid adjustment, to help close the form, even if an error occurred.
- Grid adjustment run from edit session bug is fixed.